



**OPEN MEETING**

**REGULAR MEETING OF THE UNITED LAGUNA WOODS MUTUAL LANDSCAPE  
COMMITTEE**

**Thursday, August 9, 2018 – 9:00 a.m.  
Laguna Woods Village Community Center Board Room  
24351 El Toro Road**

**AGENDA**

1. Call to Order
2. Acknowledgment of Media
3. Approval of the Agenda
4. Approval of Meeting Report for July 19, 2018
5. Chair's Remarks
6. Member Comments (Items Not on the Agenda)
7. Response to Member Comments

**Consent:**

None

**Reports:**

8. Irrigation Status Report

**Items for Discussion and Consideration:**

9. Evaluation of Alternative Herbicides
10. Tree Removal Requests
  - a) 738-D Avenida Majorca (Rhee)
  - b) 835-P Ronda Sevilla (Hunt)
  - c) 407-C Avenida Castilla (Choi)
  - d) 2001 A Via Mariposa (Serrano)

**\*\*Committee Tour – Visitation of various sites corresponding to landscape requests from Mutual Members and/or other Committee interests will be conducted after all other business is concluded.**

**Items for Future Agendas:**

11. Landscape Renovation Project Update

**Concluding Business:**

12. Committee Member Comments
13. Date of Next Meeting – October 11, 2018
14. Adjournment

Maggie Blackwell, Chair  
Bruce Hartley, Staff Officer  
Telephone: 949-597-4650

Page Intentionally Left Blank

**REPORT OF THE SPECIAL MEETING OF THE  
UNITED LAGUNA WOODS MUTUAL LANDSCAPE COMMITTEE**

Wednesday, July 19, 2018 – 9:00 a.m.  
Laguna Woods Village Community Center Board Room – 24351 El Toro Road

**MEMBERS PRESENT:** Maggie Blackwell – Chair, Manuel Armendariz, Juanita Skillman in for Janey Dorrell, Catherine Brians (Advisor)

**MEMBER ABSENT:** Annie Zipkin, Janey Dorrell

**OTHER DIRECTORS:** Dick Rader, Mary Stone

**STAFF PRESENT:** Bruce Hartley, Larry Hernandez, Lulu Boctor, Leslie Cameron, Barbara Bridges, Eileen Paulin

**1. Call to Order**

Chair Blackwell called the meeting to order at 9:00 a.m.

**2. Acknowledgement of the Press**

No media was present.

**3. Approval of the Agenda**

The agenda was approved by consensus.

**4. Approval of Committee Report of June 14, 2018**

The meeting report of June 14, 2018, was approved by consensus.

**5. Chair's Remarks**

Chair Blackwell commented – meeting is about sharing & listening, asked for courtesy from everyone.

**6. Member Comments (Items Not on the Agenda)**

- Kerry Stiles 921-B - Spoke about creek concerns
- Roberta Berk 933-B – Spoke about the lack of maintenance on Aliso Creek and Landscape.

**7. Response to Member's Comments**

- Chair Blackwell responded to Mr. Stiles 921-B, the creek is not United Mutual. Mr. Stiles needs to talk to GRF Board about his concerns about the creek.
- Director Armendariz agreed with Mr. Stiles and Ms. Berk that the creek area needs maintenance. Mr. Armendariz also commented that the budget will go up next year and budget for 2020 should decrease, he suggest we should have a tree trimming schedule for next year and for the next three years.
- Director Skillman - commented on no reports of rattlesnakes at this point.
- Advisor Brians commented on tree trimming cycle.
- Mr. Hartley to Mr. Styles, the creek is a GRF facility, GRF M & C Committee is where any updates on the creek are provided.

- Mr. Hartley to Ms. Berks, we did have several days of high temperatures that caused burning of vegetation and it set back landscaping. United is on schedule, re-planting will happen in the cooler months.
- Chair Blackwell commented that many trees were planted 50-60 years ago and it is disappointing for us to see trees that look old because of old age. United is intending to increase the landscape budget for 4% this year to increase service levels.
- Director Skillman stated that recruiting is very challenging. She asked residents to encourage people to apply.
- Mr. Armendariz commented that if you see any trees that look diseased or in poor condition to please report it for inspection.
- Mr. Hartley stated the GRF facilities are on a 10-week rotation and will address the creek concerns soon.
- Advisor Brians - Gave a brief history of trees in the village.
- Armendariz- Spoke about maintenance concerns.
- Mr. Hartley to Mr. Armendariz - There are areas that are not part of the bridge project that we can take care.

**Consent:**

None

**Reports**

**8. Current Pesticide Use In Landscape**

- Mr. Hartley gave an overview of current landscape pesticides use

Chair Blackwell - A test was performed and it takes 8 hours to spray an area, but over 64 hours to hand weed the same size area.

Armendariz- main concern is the use of Round Up. The problem is that we have a lot of property to maintain. He recommends we look into using an alternative for Round Up.

Esther Wright 172-D – Thanked the Committee for holding this meeting. Many people are concerned about the health issues with pesticides. She contacted City of Irvine to explore alternatives.

**ITEMS FOR DISCUSSION AND CONSIDERATION**

**9. Alternative Products and Application Methods**

- Mr. Hartley gave overview of landscape pesticide products and application methods

Advisor Brians – commented that we should not get too involved comparing our corporation with the City of Irvine. Irvine has no problem spending money because they have a higher tax base. We are separate from the City; we do our own landscape and we do not have that kind of funding.

Mr. Armendariz- with approval of Mutual you can plant other plants and maintain them to decrease the usage of Round Up; staff can explore alternatives to eliminate the use of Round Up.

Dr. Lois Rubin 781-C - Thankful for the work and research being done. Very concerned with the use of Round Up and impact on health. Wants to eliminate the use of Round Up and find an alternative.



Chair Blackwell recommends that we evaluate additional alternative herbicides and contact the representative from the City of Irvine in attendance at the meeting. Develop alternatives and the specific costs associated with each and see what adjustments we can make to applications for our next meeting.

Bruce to Chair Blackwell - We should begin with locating alternatives to Round Up. We will look at other herbicides in the future.

Chair Blackwell- Residents can always submit a petition.

Director Armendariz moved to have staff bring back further analysis for consideration of the elimination of Round Up in United, including cost estimates and alternatives for weed control for the next landscape meeting on August 9, 2018. Second by Ms. Skillman; passed unanimously.

### **Items for Future Agendas**

10. Evaluation of Alternative Herbicides (August 9, 2018).

### **Concluding Business**

#### **11. Committee Member Comments**

- Mr. Amendariz- Thanked everyone for attending this meeting. Staff is really trying hard.
- Chair-commented that this will cost an extra five to nine more dollars per Manor and need to balance any cost increases with areas where we would reduce cost.

#### **12. Date of Next Meeting August 9, 2018**

#### **13. Adjournment**

Meeting was adjourned at 10: 21 a.m.

---

Maggie Blackwell, Chair  
United Landscape Committee

Page Intentionally Left Blank



## STAFF REPORT

---

**DATE:** August 9, 2018  
**FOR:** Landscape Committee  
**SUBJECT:** Irrigation Status Report

---

### **RECOMMENDATION**

Receive and file this report.

### **BACKGROUND**

Beginning in July 2016, information reflecting irrigation water consumption usage and charges during the hottest months, April thru September, is provided to the Committee showing trends from 2015 to present.

### **DISCUSSION**

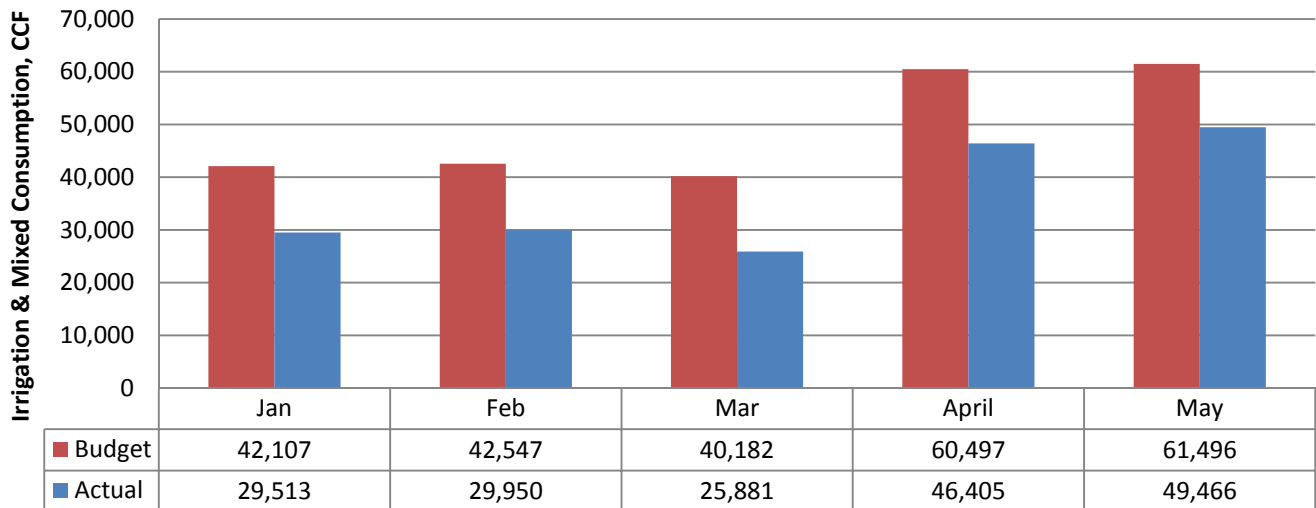
Water use data collected for April 2015 through May 2018 documents that irrigation water consumption has decreased in 2018 compared to 2017 for April and May, which reflects no drought restrictions as compared to 2015 and 2016 data for the same months. See Attachment 1.

There was zero rainfall April 2017 and 2018 and more rainfall in May 2017 compared to May 2018 and the evapotranspiration (ET) rate for both months shows a decrease from 2017. See Attachment 2. (The computerized irrigation systems use ET to determine the optimum amount to irrigate by calculating the loss of moisture in the soil through evaporation and plant transpiration.) It is evident from the charts that water consumption in April and May 2018 was lower than 2017. ET was lower, which most likely resulted in less water being used for irrigation.

United Mutual has four irrigation meters and 317 mixed meters. When the United Mutual was being built, the meters were installed to share both indoor and outdoor water uses. For United to track only water used for irrigation, these meters would need to be separated.

It is apparent from the graph on the following page that Irrigation and Mixed Consumption year-to-date in 2018 for United Mutual is lower than budget.

## United Mutual - Actual vs Budget Consumption January - May Trends for 2018



### **FINANCIAL ANALYSIS**

None

**Prepared By:** Mindra Fielding, Landscape Management Analyst

**Reviewed By:** Larry Hernandez, Landscape Manager

Bruce Hartley, General Services Director

### **ATTACHMENT(S)**

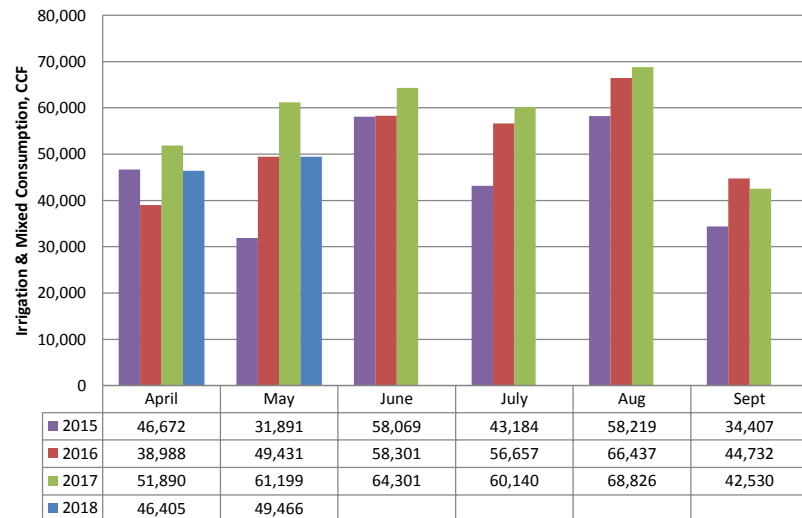
ATT-1: April – September Water Consumption Charts

ATT-2: April – September Rainfall and Evapotranspiration Trends

**UNITED MUTUAL  
APRIL - SEPTEMBER WATER CONSUMPTION TRENDS**

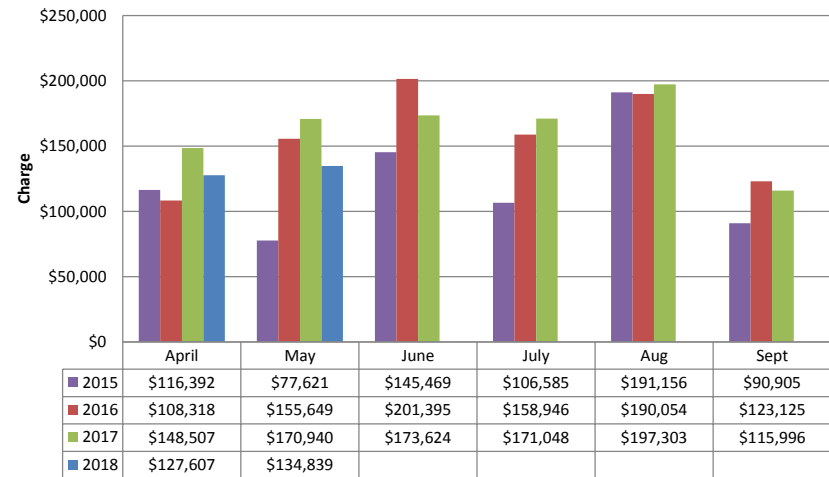
Consumption Months			UNITED IRRIGATION & MIXED CONSUMPTION, CCF							UNITED IRRIGATION & MIXED CONSUMPTION, \$\$\$							
			Potable Tier				Potable	Recycled	Total Mix & Irr	Potable Tier				Drought Penalty	Potable	Recycled	Total Mix & Irr
Date	Month	Year	1	2	3	4				1	2	3	4				
Apr-15	Apr	2015	28,781	17,596	95	200	46,672	0	46,672	\$67,348	\$47,157	\$479	\$1,408	\$0	\$116,392	\$0	\$116,392
May-15	May	2015	25,614	6,060	42	175	31,891	0	31,891	\$59,937	\$16,241	\$212	\$1,232	\$0	\$77,621	\$0	\$77,621
Jun-15	Jun	2015	31,619	26,249	141	60	58,069	0	58,069	\$73,988	\$70,347	\$711	\$422	\$0	\$145,469	\$0	\$145,469
Jul-15	Jul	2015	28,562	14,530	11	81	43,184	0	43,184	\$66,835	\$38,940	\$55	\$570	\$184	\$106,585	\$0	\$106,585
Aug-15	Aug	2015	28,903	21,927	6,261	1,128	58,219	0	58,219	\$71,101	\$62,053	\$35,124	\$8,099	\$14,778	\$191,156	\$0	\$191,156
Sep-15	Sep	2015	25,323	8,520	432	132	34,407	0	34,407	\$62,295	\$24,112	\$2,424	\$948	\$1,128	\$90,905	\$0	\$90,905
Apr-16	Apr	2016	24,454	13,103	1,310	121	38,988	0	38,988	\$60,157	\$37,081	\$7,349	\$869	\$2,862	\$108,318	\$0	\$108,318
May-16	May	2016	27,857	16,415	4,263	896	49,431	0	49,431	\$68,528	\$46,454	\$23,915	\$6,433	\$10,318	\$155,649	\$0	\$155,649
Jun-16	Jun	2016	27,718	21,434	7,285	1,864	58,301	0	58,301	\$68,186	\$60,658	\$40,869	\$13,384	\$18,298	\$201,395	\$0	\$201,395
Jul-16	Jul	2016	24,703	29,290	2,447	217	56,657	0	56,657	\$60,769	\$82,891	\$13,728	\$1,558	\$0	\$158,946	\$0	\$158,946
Aug-16	Aug	2016	30,951	31,036	3,738	712	66,437	0	66,437	\$76,139	\$87,832	\$20,970	\$5,112	\$0	\$190,054	\$0	\$190,054
Sep-16	Sep	2016	24,584	18,242	1,695	211	44,732	0	44,732	\$60,477	\$51,625	\$9,509	\$1,515	\$0	\$123,125	\$0	\$123,125
Apr-17	Apr	2017	24,505	23,780	3,157	448	51,890	0	51,890	\$60,282	\$67,297	\$17,711	\$3,217	\$0	\$148,507	\$0	\$148,507
May-17	May	2017	28,854	29,406	2,778	161	61,199	0	61,199	\$70,981	\$83,219	\$15,585	\$1,156	\$0	\$170,940	\$0	\$170,940
Jun-17	Jun	2017	29,468	33,959	794	80	64,301	0	64,301	\$72,491	\$96,104	\$4,454	\$574	\$0	\$173,624	\$0	\$173,624
Jul-17	Jul	2017	24,701	33,733	1,553	153	60,140	0	60,140	\$62,247	\$98,163	\$9,442	\$1,196	\$0	\$171,048	\$0	\$171,048
Aug-17	Aug	2017	28,391	38,047	2,088	300	68,826	0	68,826	\$71,545	\$110,717	\$12,695	\$2,346	\$0	\$197,303	\$0	\$197,303
Sep-17	Sep	2017	23,509	18,627	306	88	42,530	0	42,530	\$59,243	\$54,205	\$1,860	\$688	\$0	\$115,996	\$0	\$115,996
Apr-18	Apr	2018	25,262	20,447	573	123	46,405	0	46,405	\$63,660	\$59,501	\$3,484	\$962	\$0	\$127,607	\$0	\$127,607
May-18	May	2018	28,699	20,157	523	87	49,466	0	49,466	\$72,321	\$58,657	\$3,180	\$680	\$0	\$134,839	\$0	\$134,839
Total Irrigation:			542,458	442,558	39,492	7,237	1,031,745	0	1,031,745	\$1,328,531	\$1,253,255	\$223,756	\$ 52,370	\$47,568	\$2,905,480	\$ -	\$ 2,905,480

**United Mutual - Irrigation & Mixed Consumption  
April - September Trends**



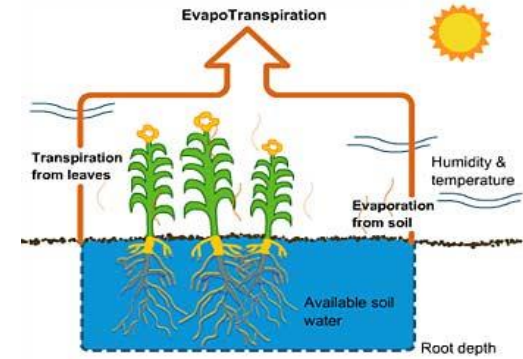
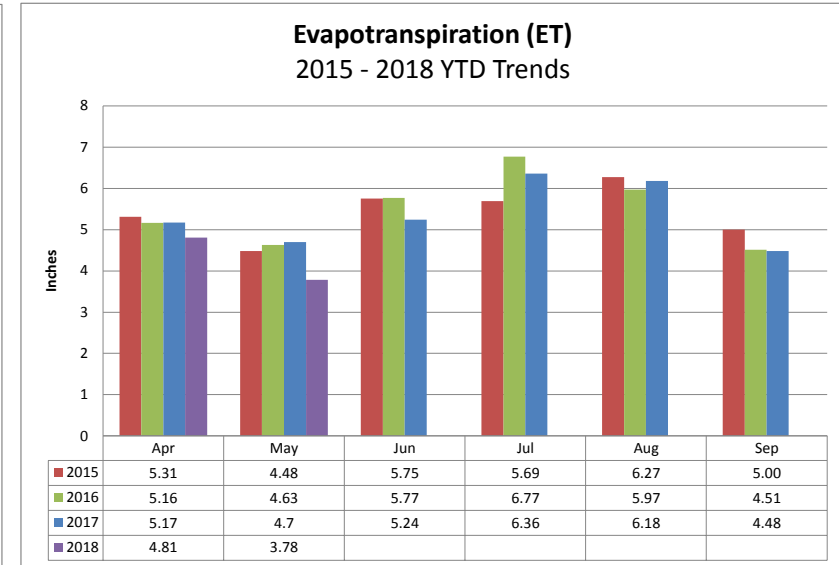
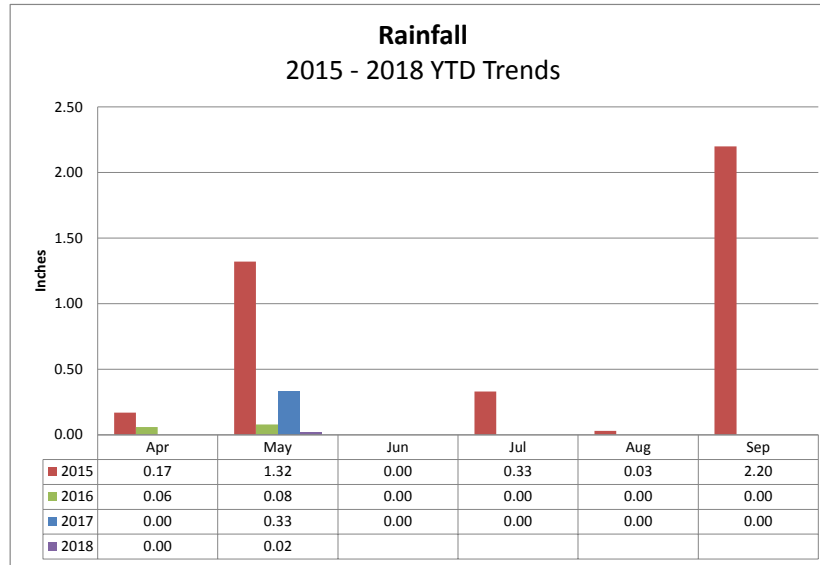
**Note:** Drought restrictions were in place from July 2015 thru June 2016.

**United Mutual - Irrigation & Mixed Consumption  
\$\$\$  
April - September Trends**



**Note:** Effective July 2017, ETWD increased the Recycled and Tier Rates.

**LANDSCAPE DIVISION**  
**Rainfall and Evapotranspiration Trends**



It's a sunny day and the crop is absorbing available soil water from the root zone (root depth). As a result of humidity and temperature, water transpires through the leaves and evaporates from the soil into the atmosphere. This process is called EvapoTranspiration. When it rains, with low humidity and temperature, this process does not occur.

## STAFF REPORT

---

**DATE:** August 9, 2018  
**FOR:** Landscape Committee  
**SUBJECT:** Evaluation of Alternative Herbicides

---

### **RECOMMENDATION**

Implement the use of five organic herbicide alternatives on trial basis in United Mutual to determine the feasibility of eliminating the use of 'Round Up' herbicide or other products currently in use that have glyphosate as the active ingredient. Present the results to the Landscape Committee at the December 2018 meeting.

### **BACKGROUND**

At the June 19, 2018, special meeting of the Landscape Committee, staff presented information on the herbicides currently applied by staff to manage landscape weeds in United Mutual. Staff explained the regulatory requirements that any product applied to landscape to control plants must be registered by the Environmental Protection Agency (EPA) and approved for use in California by the Department of Pesticide Regulation (DPR). Information on the toxicity of currently applied pesticides and the organically derived alternative pesticides was presented; noting that organic products carry the same warning levels as the synthetic materials currently in use.

One member spoke to the Committee expressing concerns for the health and well-being of the Village residents and their pets as it relates to the use of pesticides around their homes. The speaker referenced the efforts by the City of Irvine to eliminate all synthetic pesticides and the coordinated efforts by 'Non-Toxic Neighborhoods', a group of concerned citizens in Irvine that support the transition away from traditional pesticide products.

The Committee directed staff to provide alternatives to 'Round Up' herbicide and to contact the representative from Non-Toxic Irvine to gain additional information on effective organic herbicides currently in use on public property in the City of Irvine.

On July 24, 2018, the General Services Director met with the representative of Non-Toxic Irvine and obtained information on additional organic pesticides that could be evaluated for use in Laguna Woods Village. Background information on several products and innovative methods and anecdotal results achieved in other southland cities was discussed.

### **DISCUSSION**

Currently, the Landscape Division uses 'Round Up' primarily for the non-selective control of weeds and grasses in shrub beds or open space. This product is also used to 'edge' around

trees, valve boxes, or other items located within turf areas as well as for managing the edge of turf along planter beds.

There are several readily available DPR registered organic herbicides that could potentially support the effort to eliminate the use of glyphosate containing herbicides. Each one has a unique chemical base and mode of action. All are certified organic by the Organic Materials Review Institute (OMRI). For most applications, the organic herbicides listed below would be suitable for use in landscape situations currently encountered in United Mutual.

#### Suppress EC:

This herbicide is EPA, DPR and OMRI approved. The active ingredients in Suppress EC are caprylic acid and capric acid. It is a broad spectrum contact herbicide, which means the product kills only the portion of the plant that is sprayed with the herbicide; it does not kill the roots. The manufacturer claims it will control a wide range of weeds, but may require a stronger mixture to control problem weeds. It costs approximately \$100 per gallon of product and is recommended to be applied in a mixture of water to achieve a 3%, 6% or 9% solution. The cost per gallon applied at the highest strength would be \$9.

#### Final-San-O:

This herbicide is EPA, DPR and OMRI approved. The active ingredients in Final-San-O ammoniated soaps of fatty acids. It is a broad spectrum contact herbicide that, according to the manufacturer, is effective on weeds that are less than five inches in height; in their early growth stage where they are more vulnerable to herbicides. It costs approximately \$93 per gallon of product and is recommended to be applied in a mixture of water to achieve a 16% solution. The cost per gallon applied at the highest strength would be \$15.

#### EcoBlend:

This herbicide is EPA, DPR and OMRI approved. The active ingredients in EcoBlend are from a soybean oil base. It is a broad spectrum contact herbicide that is labeled to control a wide variety of weeds. It costs approximately \$24 per gallon of product and is recommended to be applied in a mixture of water to achieve a 33% or 50% solution. The cost per gallon applied at the highest strength would be \$24.

#### Weed Pharm:

This product is a vinegar based product that is EPA and U.S. Department of Agriculture approved. It is applied full strength and is labeled for control of a broad spectrum of weeds, including Bermuda grass and nutsedge; difficult weeds to control for most organic herbicides. The cost per gallon to apply is \$24.

#### Weed Zap:

According to the manufacturer, this product is exempt from EPA registration requirements and is OMRI certified. It is a broad spectrum herbicide that is formulated from clove and cinnamon oils. It costs \$90 per gallon and is applied in a 5% mixture. The cost per gallon applied would be \$4.50.



## **Biolink and Oroboost:**

These products are adjuvants that are added to the spray mixture to insure the optimal results of many of the organic herbicide products. Biolink is an acidifier, which modifies the pH of the spray mix for more effective results. It also improves penetration of the organic herbicide into the plant, to maximize the effects of the product. Oroboost performs a similar function without modifying the pH of the spray mixture. Similar non-organic products are used in most spray mixtures staff are currently applying. These products would be added to all herbicides included in the trial to insure the mixtures are as effective as possible.

## **Avenger:**

This product is EPA, DPR and OMRI approved. It is a citrus oil based, non-systemic contact herbicide. Staff has been testing this product for approximately 30 days. While somewhat effective on many weeds, staff has found Avenger to have little effect on the controlling kikuyu grass, even at maximum rates. It will be eliminated from further consideration for use.

With the exception of Avenger herbicide, staff is recommending the purchase and trial of the above five organic herbicides for a 100-day trial, during which, no 'Round Up' or other glyphosate containing products will be applied in United Mutual. Staff will track the material cost, labor hours, application rates and any repeat applications (if necessary). Staff will make a qualitative evaluation of the effectiveness of each product and the visual quality of the landscape as well. Results will be reported back to the Landscape Committee in December for discussion and consideration.

## **FINANCIAL ANALYSIS**

There is a minor cost associated with the purchase of the above products necessary for the evaluation; likely to be less than \$1,000.

**Prepared By:** Bruce Hartley, General Services Director

**Reviewed By:** Siobhan Foster, Chief Operating Officer

## **ATTACHMENT(S)**

ATT-1: Organic Herbicide Product Labels

ATT-2: Non-toxic Neighborhoods 2018 Preferred Product List



# EcoBlend®

**Made With Organic Vegetable Oils**

## Weed & Grass Burndown

**Post-Emergent Herbicide** **For Organic Production**

**For use in Agricultural Crops, Residential, Aquatic, Industrial**

- **NON SELECTIVE QUICK BURN DOWN and BIODEGRADABLE**
- **MADE WITH NON-GMO & Edible Oils and Food Grade Ingredients**
- **BREAKS DOWN PLANT MASS INTO BENEFICIAL SOIL NUTRIENTS**
- **SAFE FOR WATER, FARMS, RESIDENTIAL AREAS, NO POISONS**

SEE BACK LABEL FOR WEED CONTROL DIRECTIONS, APPLICATION AND PRECAUTIONARY STATEMENTS

Manufactured by HOMS, LLC

\*Other Ingredients: Water, Soap, Organic Coconut Oil, Citric Acid; **CERTIFIED BY QAI**

For Organic Use

Active Ingredients:  
Soybean Oil (Organic).....20%  
Other Ingredients\*.....80%  
Total.....100%

Net Weight:

☐ 64 oz
 ☐ 2.5 gal
 ☐ 55 gal
 ☐ 270 gal



## 2018 - Preferred Product List:

Weed Abatement	
Suppress EC (Non-selective)	OMRI® Listed/weed control, as needed (Caprylic Acid and Capric Acid) <a href="https://westbridge.com/suppress-herbicide-ec-receives-epa-approval/">https://westbridge.com/suppress-herbicide-ec-receives-epa-approval/</a>
Final-San-O (Non-selective)	OMRI® Listed , NOP Approved/fast-acting weed, grass, algae and moss killer. It suppresses the growth of some bi-annual and perennial weeds. Final-San-O can be used at any time during the year, and areas can be re-sown 5 days after treatment. <a href="http://www.neudorffpro.com/index.php?id=1838">http://www.neudorffpro.com/index.php?id=1838</a>
Weed Zap (Non-selective)	OMRI® Listed/broad spectrum, biodegradable, foliar herbicide is made from clove and cinnamon oils. It will only control actively growing emerged green vegetation and controls annual and perennial broadleaf and grassy weeds. It will only affect plants that are coated with the spray solution and does not damage non-green woody plants. <a href="https://www.arbico-organics.com/product/weed-zap-jh-biotech/natural-organic-weed-control">https://www.arbico-organics.com/product/weed-zap-jh-biotech/natural-organic-weed-control</a>
Weed Pharm (Non-selective)	OMRI® Listed, and WSDA Certified/University trials that prove 20% Acetic Acid is as effective as Glyphosate in killing annual and broadleaf weeds with one application. It also works on poison ivy and poison oak. <a href="http://www.pharmsolutionsinc.com/weedpharm.htm">http://www.pharmsolutionsinc.com/weedpharm.htm</a>
Fiesta (Selective)	(Non-organic) In turf, as needed(chelated iron broadleaf herbicide) <a href="http://www.neudorffpro.com/fileadmin/user_upload/Fact_Sheets/Fiesta_CAN-10-06-2014.pdf">http://www.neudorffpro.com/fileadmin/user_upload/Fact_Sheets/Fiesta_CAN-10-06-2014.pdf</a>
Surfactants/PH balancer	
Oroboost	OROBOOST is the only organic adjuvant with proprietary <u>TransPhloem</u> ™ technology that accelerates input translocation throughout plants, including roots, to deliver active ingredients for

Page Intentionally Left Blank



## STAFF REPORT

---

**DATE:** August 9, 2018  
**FOR:** Landscape Committee  
**SUBJECT:** Request for Tree Removal: Rhee (738-D) – Carrotwood

---

### **RECOMMENDATION**

Deny the request for the removal of one Carrotwood tree and trim on schedule.

### **BACKGROUND**

Ms. Rhee purchased the manor in May 2006. She is requesting the removal of one Carrotwood tree, *Cupaniopsis anacardioides*, located in the turf area at the front of her manor. See Attachment 1. The reasons cited by her for the removal are: structural damage, overgrown, sewer damage, and if the tree was to fall there would be damage to the manor as well as the residents. Six additional neighbors have signed the request in favor of the removal. See Attachment 2.

The tree was last pruned in November 2015 and is scheduled for pruning again in January 2019. It is approximately 25 feet in height with a trunk diameter of 15 inches. It is growing approximately four to six feet from the sidewalk and approximately six to eight feet from the patio.

### **DISCUSSION**

At the time of inspection, the tree was found to be in good condition with no visible decay, pests or trunk damage. Minor lifting of the sidewalk is visible. Concrete grinding has been performed in the past. Although there is cracking in the patio, it did not appear to correlate to the roots of this tree. However, there are other trees in close proximity to this tree, including a Chinese Elm, another Carrotwood and a Bottle Brush tree. While the resident states sewer damage on the Mutual Request Form, to date there have been no reported stoppages reported at this manor.

### **FINANCIAL ANALYSIS**

The cost to remove the tree is estimated at \$ 1,200 cost to trim is estimated at \$250 and the estimated value is \$3,064 based on ArborPro tree inventory.

**Prepared By:** Bob Merget, Tree Supervisor

**Reviewed By:** Larry Hernandez, Landscape Manager

Bruce Hartley, General Services Director

United Laguna Woods Mutual  
Request for Tree Removal by – 738-D (Rhee) – Carrotwood  
August 9, 2018

**ATTACHMENT(S)**

ATT-1: Photographs

ATT-2: Mutual Landscape Request Form







United Laguna Woods Mutual  
Request for Tree Removal by – 738-D (Rhee) – Carrotwood  
August 9, 2018







## MUTUAL LANDSCAPE REQUEST FORM

PLEASE NOTE: THIS FORM IS NOT INTENDED FOR ROUTINE MAINTENANCE REQUESTS

RECEIVED  
JUN 13 2018  
LANDSCAPE

For all non-routine requests, please fill out this form. Per the policy of your Mutual, if your request falls outside the scope of the managing agent's authority, it will be forwarded to the Mutual's Landscape Committee for review. If you are unsure whether your request falls into this category, first contact Resident Services at 597-4600 in order to make that determination.

**PLEASE RETURN COMPLETED REQUEST FORM TO RESIDENT SERVICES.**

### Resident/Owner Information

*You must be an owner to request non-routine Landscape requests.*

738 Avenida majorca unit-D  
Laguna Woods, Ca 92637

Address

6/13/18

Today's Date

Susan Rhee

Resident's Name

(714) 878-6375

Telephone Number

### Non-Routine Request

*Please checkmark the item that best describes your request. If none apply, please checkmark "Other" and explain.*

☒ Tree Removal

☐ New Landscape

☐ Off-Schedule Trimming

☐ Other (explain):

### Reason for Request

*Please checkmark the item(s) that best explain the reason for your request.*

☒ Structural Damage ☒ Sewer Damage ☒ Overgrown ☐ Poor Condition

☐ Litter/Debris ☐ Personal Preference ☐ View Obstruction

☐ Other (explain):

#### **GUIDELINES:**

- Structural/Sewer Damage: Damage to buildings, sidewalks, sewer pipes, or other facilities may justify removal if corrective measures are not practical.
- Overgrown/Crowded: Trees or plants that have outgrown the available space may justify removal.
- Damaged/Declining Health: Trees or plants that are declining in health will be evaluated for corrective action before removal/replacement is considered.
- View Blockage: By nature, view blockage must be reviewed case by case to determine the appropriate course of action.
- Litter and Debris: Because all trees shed litter seasonally, generally this is not an adequate reason to justify removal. However, if granted, removal/replacement may be at the resident's expense.
- Personal Preference: Because one does not like the appearance or other characteristics of the tree or plant generally does not justify its removal. However, if granted, removal/replacement is usually at the resident's expense.

### Description & Location of Request

Please briefly describe the situation and the exact location of the subject of the request (e.g., "roots of pine tree in front of manor XYZ are lifting the sidewalk"). Attach pictures as necessary.

1) If the Carrot Wood tree root continues to grow big, it will give damage to the house building and the sewer.

2) The tree is leaning over the patio wall, and if it fails, there is a risk of damage to the house and people.

### Signatures of All Neighbors Affected By This Request

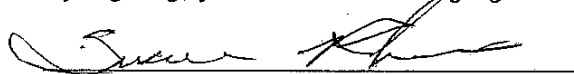
Because your request may affect one or more of your neighbors, it is imperative that you obtain their signatures, manor numbers, and whether they are for, undecided, or against this request.

Signature	Manor #	For	Undecided	Against
Sandra Hasson	737A	✓		
Betty Lucas	737B	✓		
Sue Bob Yon	756D	✓		
Lynette Lowrey	738E	✓		
Robert Mitchell	738F	✓		
Carolyn Kraus	738G	✓		

(Please attach a separate sheet if more signatures are necessary.)

### Acknowledgement - Owner

By signing, you are acknowledging this request.

  
Owner's Signature

Susan Rhee  
Owner's Name

### OFFICE USE ONLY

MOVE-IN DATE: \_\_\_\_\_ DATE: \_\_\_\_\_ INITIALS: \_\_\_\_\_

530 \_\_\_\_\_ 540 \_\_\_\_\_

570 \_\_\_\_\_ LAST PRUNED: \_\_\_\_\_

RELANDSCAPED: \_\_\_\_\_

NEXT TIME: \_\_\_\_\_

TREE SPECIES: \_\_\_\_\_

COMMENTS: \_\_\_\_\_

TREE VALUE: \_\_\_\_\_ TREE REMOVAL COST: \_\_\_\_\_



## STAFF REPORT

---

**DATE:** August 9, 2018  
**FOR:** Landscape Committee  
**SUBJECT:** Request for Tree Removal: Hunt (835-P) – Brazilian Pepper

---

### **RECOMMENDATION**

Deny the request for the removal of one Brazilian Pepper located at 835-P and trim on schedule.

### **BACKGROUND**

Ms. Hunt is the lessee who is acting on the behalf of Ms. Chung, the owner. Staff confirmed via telephone conversation with Ms. Chung, who purchased the manor in September 2014, that she is requesting the removal of one Brazilian Pepper tree, *Schinus terebinthifolius* located in the turf area at the rear of her manor. See Attachment 1. The reasons cited by her for the removal are: active bees, wasps, hornets and spiders. She states that she has been bitten several times by both brown recluse and black widow spiders. Two additional neighbors have signed in favor of the removal and one has signed against the removal. See Attachment 2.

The tree was fully trimmed in October 2015 and is scheduled for pruning again in January 2019. In an attempt to address Ms. Hunt's concerns, an off-scheduled trimming for additional clearance from her manor was performed in March 2018. The tree is approximately 28 feet in height with a trunk diameter of approximately 14 inches. It is growing approximately three feet from the sidewalk and approximately 10-12 feet from the building.

### **DISCUSSION**

At the time of inspection, the tree was found to be in good condition with no visible decay, pests or trunk damage. There is sufficient clearance from Ms. Hunt's balcony to prevent any spiders from entering the manor from the tree. It was also explained that any sightings of bees or wasps may be reported to Resident Services and a work ticket will be generated to have staff eradicate any hives or nests. The tree is causing no damage to adjacent hardscape or infrastructure. There is evidence of previous concrete grinding.

### **FINANCIAL ANALYSIS**

The cost to remove the tree is estimated to be \$2,500. The cost to trim the tree is estimated to be \$450; with an estimated value of \$3,124 based on the ArborPro tree inventory.

United Laguna Woods Mutual  
Request for Tree Removal by – 835-P (Hunt) – Brazilian Pepper  
August 9, 2018

**Prepared By:** Bob Merget, Tree Supervisor

**Reviewed By:** Larry Hernandez, Landscape Manager

Bruce Hartley, General Services Director

**ATTACHMENT(S)**

ATT-1: Photographs

ATT-2: Mutual Landscape Request Form







RECEIVED  
JUN 29 2018

LANDSCAPE DIVISION

## MUTUAL LANDSCAPE REQUEST FORM

PLEASE NOTE: THIS FORM IS NOT INTENDED FOR ROUTINE MAINTENANCE REQUESTS

For all non-routine requests, please fill out this form. Per the policy of your Mutual, if your request falls outside the scope of the managing agent's authority, it will be forwarded to the Mutual's Landscape Committee for review. If you are unsure whether your request falls into this category, first contact Resident Services at 597-4600 in order to make that determination.

**PLEASE RETURN COMPLETED REQUEST FORM TO RESIDENT SERVICES.**

### Resident/Owner Information

You must be an owner to request non-routine Landscape requests.

835 P Conda Seville  
Address

6/25/18  
Today's Date

Ornelia Nart  
Resident's Name

949-702 3516  
Telephone Number

### Non-Routine Request

Please checkmark the item that best describes your request. If none apply, please checkmark "Other" and explain.

☒ Tree Removal

☐ New Landscape

☐ Off-Schedule Trimming

☐ Other (explain):

### Reason for Request

Please checkmark the item(s) that best explain the reason for your request.

☐ Structural Damage ☐ Sewer Damage ☐ Overgrown ☐ Poor Condition

☐ Litter/Debris ☐ Personal Preference ☐ View Obstruction

☒ Other (explain): Tree was active bees, wasps, hornets and spiders  
They get into my navel

#### **GUIDELINES:**

- Structural/Sewer Damage: Damage to buildings, sidewalks, sewer pipes, or other facilities may justify removal if corrective measures are not practical.
- Overgrown/Crowded: Trees or plants that have outgrown the available space may justify removal.
- Damaged/Declining Health: Trees or plants that are declining in health will be evaluated for corrective action before removal/replacement is considered.
- View Blockage: By nature, view blockage must be reviewed case by case to determine the appropriate course of action.
- Litter and Debris: Because all trees shed litter seasonally, generally this is not an adequate reason to justify removal. However, if granted, removal/replacement may be at the resident's expense.
- Personal Preference: Because one does not like the appearance or other characteristics of the tree or plant generally does not justify its removal. However, if granted, removal/replacement is usually at the resident's expense.

ATT: ~~tree service~~ tree service

## Description &amp; Location of Request

Please briefly describe the situation and the exact location of the subject of the request (e.g., "roots of pine tree in front of manor XYZ are lifting the sidewalk"). Attach pictures as necessary.

Tree is in <sup>beside</sup> front of my manor.  
 I have had several spider bites  
 both brown recluse and black widow -

## Signatures of All Neighbors Affected By This Request

Because your request may affect one or more of your neighbors, it is imperative that you obtain their signatures, manor numbers, and whether they are for, undecided, or against this request.

Signature	Manor #	For	Undecided	Against
Margaret Chung	835-B	✓		
Lois Stierm	835-A	✓		
Neil & Rose	835-C			✓

(Please attach a separate sheet if more signatures are necessary.)

## Acknowledgement - Owner

By signing, you are acknowledging this request.

\* Margaret Chung  
 Owner's Signature

Margaret Chung  
 Owner's Name

## OFFICE USE ONLY

MOVE-IN DATE: \_\_\_\_\_

DATE: \_\_\_\_\_ INITIALS: \_\_\_\_\_

530 \_\_\_\_\_ 540 \_\_\_\_\_

570 \_\_\_\_\_ LAST PRUNED: \_\_\_\_\_

RELANDSCAPED: \_\_\_\_\_

NEXT TIME: \_\_\_\_\_

TREE SPECIES: \_\_\_\_\_

COMMENTS: \_\_\_\_\_

TREE VALUE: \_\_\_\_\_ TREE REMOVAL COST: \_\_\_\_\_

\* my leave gives me permission to  
 act in the owner's behalf.

Page Intentionally Left Blank





## STAFF REPORT

---

**DATE:** August 9, 2018  
**FOR:** Landscape Committee  
**SUBJECT:** Request for Tree Removal: Choi (407-C) – Canary Island Pine

---

### **RECOMMENDATION**

Approve the request for the removal of one Canary Island Pine tree located across from 407-C at 409-A and schedule the removal by December 2018.

### **BACKGROUND**

Ms. Choi purchased the manor in July 2008. She is requesting the removal of one Canary Island Pine tree, *Pinus canariensis*, located in the turf area at the front of her manor. See Attachment 1. The reasons cited by her for the removal are: heavy litter/debris, overgrown, sewer damage, allergic to the pine cones and could be a hazard while walking. Six additional neighbors have signed the request in favor of the removal. See Attachment 2.

The tree was last pruned in October 2015 and is scheduled for pruning again in January 2019. It is approximately 52 feet in height with a trunk diameter of approximately 27 inches. It is growing approximately eight to ten feet from the sidewalk and approximately five to six feet from building 409-A. Staff is supporting the removal as part of a program to reduce the number of Canary Island Pine trees in United Mutual due to the many negative impacts they have on residents and maintenance operations.

### **DISCUSSION**

At the time of inspection, the tree was found to be in good condition with no visible decay, pests or trunk damage. Multiple surface roots are present on both sides of the walkway. Given the proximity to the sidewalk, there is not sufficient space to root prune the aggressive surface rooting without compromising the stability of the tree. There is some noticeable rising of the sidewalk, with evidence of previous grinding to eliminate trip hazards. There was a mainline stoppage reported in July 2017 at 707-C with no mention of tree roots being the cause. No stoppages have been recorded at 409-A.

### **FINANCIAL ANALYSIS**

The cost to remove the tree is estimated to be \$ 3,000. The cost to trim the tree is estimated to be \$450; with an estimated value of \$7,539 based on the ArborPro tree inventory.

United Laguna Woods Mutual  
Request for Tree Removal by – 407-C (Choi) – Canary Island Pine  
August 9, 2018

**Prepared By:** Bob Merget, Tree Supervisor

**Reviewed By:** Larry Hernandez, Landscape Manager

Bruce Hartley, General Services Director

**ATTACHMENT(S)**

ATT-1: Photographs

ATT-2: Mutual Landscape Request Form









RECEIVED  
Laguna Woods Village  
MAY 16 2018  
LANDSCAPE DIVISION

## MUTUAL LANDSCAPE REQUEST FORM

PLEASE NOTE: THIS FORM IS NOT INTENDED FOR ROUTINE MAINTENANCE REQUESTS

For all non-routine requests, please fill out this form. Per the policy of your Mutual, if your request falls outside the scope of the managing agent's authority, it will be forwarded to the Mutual's Landscape Committee for review. If you are unsure whether your request falls into this category, first contact Resident Services at 597-4600 in order to make that determination.

**PLEASE RETURN COMPLETED REQUEST FORM TO RESIDENT SERVICES.**

### Resident/Owner Information

You must be an owner to request non-routine Landscape requests.

407 # e Avenida Castellana Laguna Woods, CA 5/16/18  
Address 92637 Today's Date  
MARILYN B 2401 951-442-0611  
Resident's Name Telephone Number

### Non-Routine Request

Please checkmark the item that best describes your request. If none apply, please checkmark "Other" and explain.

- ☒ Tree Removal ☐ New Landscape ☐ Off-Schedule Trimming  
☐ Other (explain): \_\_\_\_\_

### Reason for Request

Please checkmark the item(s) that best explain the reason for your request.

- ☒ Structural Damage ☒ Sewer Damage ☒ Overgrown ☐ Poor Condition  
☐ Litter/Debris ☐ Personal Preference ☐ View Obstruction  
☐ Other (explain): \_\_\_\_\_

### GUIDELINES:

- Structural/Sewer Damage: Damage to buildings, sidewalks, sewer pipes, or other facilities may justify removal if corrective measures are not practical.
- Overgrown/Crowded: Trees or plants that have outgrown the available space may justify removal.
- Damaged/Declining Health: Trees or plants that are declining in health will be evaluated for corrective action before removal/replacement is considered.
- View Blockage: By nature, view blockage must be reviewed case by case to determine the appropriate course of action.
- Litter and Debris: Because all trees shed litter seasonally, generally this is not an adequate reason to justify removal. However, if granted, removal/replacement may be at the resident's expense.
- Personal Preference: Because one does not like the appearance or other characteristics of the tree or plant generally does not justify its removal. However, if granted, removal/replacement is usually at the resident's expense.

### Description & Location of Request

Please briefly describe the situation and the exact location of the subject of the request (e.g., "roots of pine tree in front of manor XYZ are lifting the sidewalk"). Attach pictures as necessary.

---



---



---

### Signatures of All Neighbors Affected By This Request

Because your request may affect one or more of your neighbors, it is imperative that you obtain their signatures, manor numbers, and whether they are for, undecided, or against this request.

Signature	Manor #	For	Undecided	Against
<i>[Signature]</i>	408D	✓		
<i>[Signature]</i>	408B	✓		
<i>[Signature]</i>	409B	✓		
<i>[Signature]</i>	408C	✓		
<i>[Signature]</i>	409A	✓		
<i>[Signature]</i>	407D	✓		

(Please attach a separate sheet if more signatures are necessary.)

### Acknowledgement - Owner

By signing, you are acknowledging this request.

*[Signature]*  
Owner's Signature

MARIANNE CHOI  
Owner's Name

### OFFICE USE ONLY

MOVE-IN DATE: \_\_\_\_\_ DATE: \_\_\_\_\_ INITIALS: \_\_\_\_\_  
 530 \_\_\_\_\_ 540 \_\_\_\_\_ 570 \_\_\_\_\_ LAST PRUNED: \_\_\_\_\_  
 RELANDSCAPED: \_\_\_\_\_ NEXT TIME: \_\_\_\_\_  
 TREE SPECIES: \_\_\_\_\_  
 COMMENTS: \_\_\_\_\_  
 TREE VALUE: \_\_\_\_\_ TREE REMOVAL COST: \_\_\_\_\_

To may it concerned:

May 16, 2018

Reasons for removing the pine tree near the side walk :

1. I am allergic to the fallen pine con.
2. The safety of people walking on the side walk over the pine tree debris.
3. Pine tree debris falling on the roof and gutter.
4. Pine tree roots coming up in my front yard.
5. Concern for the safety of the people walking on the side walk full of pine cone debris all year round.
6. Accident case one: This spring I was sweeping in the side walk to remove pine tree debris, big pine cone falling to my head. Luckily I wear hat on.
7. Pine cone falling often on all year around.

Page Intentionally Left Blank





## STAFF REPORT

---

**DATE:** August 9, 2018  
**FOR:** Landscape Committee  
**SUBJECT:** Request for Tree Removal: Serrano (2001-A) – Brazilian Pepper

---

### **RECOMMENDATION**

Deny the request for the removal of one Brazilian Pepper and perform an off-schedule trimming in September 2018 to reduce the canopy.

### **BACKGROUND**

Ms. Serrano purchased the manor in January 2017. She is requesting the removal of a Brazilian Pepper tree, *Schinus terebinthifolius*, located at the front of her manor in the raised shrub bed. See Attachment 1. The reasons cited by her for the removal are: heavy litter/debris, seeds generated from the tree are potentially dangerous for her dog if eaten and damage to the laminate floor from tracking in the berries on shoes. Three neighbors have signed the request in favor of the removal. See Attachment 2.

The tree was last pruned in June 2017 and is scheduled for pruning again in June 2020. It is approximately 36 feet in height with a trunk diameter of approximately 31 inches and is growing approximately three to four feet from the patio wall.

### **DISCUSSION**

At the time of inspection, the tree was found to be in good condition with no visible decay, pests or trunk damage. There are noticeable surface roots with no observable damage to the adjacent patio wall. There has been concrete grinding performed on the walkway to prevent any trip hazards and the walkway approaching the manor has been replaced. Although the tree was trimmed over a year ago, it has grown to the size where clearance trimming will be required prior to the scheduled trimming. Staff will trim to reduce end weight and the crown of the tree.

### **FINANCIAL ANALYSIS**

The cost to remove the tree is estimated to be \$ 2,100. The cost to trim the tree is estimated to be \$550; with an estimated value is \$9,460 based on the ArborPro tree inventory.

**Prepared By:** Bob Merget, Tree Supervisor

**Reviewed By:** Larry Hernandez, Landscape Manager

Bruce Hartley, General Services Director

United Laguna Woods Mutual  
Request for Tree Removal by – 2001-A (Serrano) – Brazilian Pepper  
August 9, 2018

**ATTACHMENT(S)**

ATT-1: Photographs

ATT-2: Mutual Landscape Request Form with letter and attachments









RECEIVED  
JUL 13 2018  
LANDSCAPE DIVISION

RECEIVED  
JUL 13 2018

# MUTUAL LANDSCAPE REQUEST FORM

PLEASE NOTE: THIS FORM IS NOT FOR ROUTINE MAINTENANCE REQUESTS

BY: AS

Your request is important to us and will be handled accordingly. Per the policy of your Mutual, if your request falls outside the scope of the managing agent's authority, it will be forwarded to the Landscape Committee for their review. If you are unsure whether your request falls into this category, first please contact your area's landscape supervisor through Property Services at 597-4600 in order to make that determination. If this is the case, then first you will receive a written confirmation acknowledging receipt of your request with an explanation of the review process. Once reviewed by the Committee, a recommendation will be made to the Board of Directors for action. You will then be notified of the Board's decision. Please be patient as this process can take from a few weeks to a month or longer.

Date: 7-12-18

Address: 2001 VIA MARIPOSA W. Unit A

Requestor Signature: [Signature]

Print Name: Sergio & Myra Serrano  
(owner signature is required on the line above if the requestor is a lessee or occupant)

**Request (please check):** REFER TO GUIDELINES ON REVERSE SIDE

- ☒ Tree Removal    ☐ Plant Replacement    ☐ Off-Schedule Trimming
- ☐ Landscape Design Change (e.g., Alteration of Turf and/or Flower Bed, Paved Planter Conversion, Stepping Stones, Mortarless Block Garden Walls, etc.): **Please note that all requests for design changes must include a design plan with a description (including a list of plant selections and/or materials, if applicable).**

☐ Other (explain): \_\_\_\_\_

**Reason (please check):** REFER TO GUIDELINES ON REVERSE SIDE

- ☐ Structural Damage    ☐ Sewer Damage    ☐ Overgrown    ☐ Poor Condition
- ☒ Litter/Debris    ☐ Personal Preference    ☐ View Obstruction    ☒ Other (explain):

SEE ATTACHED

**Description & Location:**

TREE IN FRONT OF MANOR 2001 A

★ **Signatures of All Neighbors Affected by this Request (owner signature is required below for lessees and occupants of neighboring residences):**

Signature	Manor #	For	Undecided	Against
<u>Hyo Sup Han</u>	<u>2001 D</u>	<u>X</u>	—	—
<u>Yung S. Rim</u>	<u>2004 D</u>	<u>X</u>	—	—
<u>Gracie M. Viles</u>	<u>2003-B</u>	<u>X</u>	—	—
<u>Hepler Modica</u>	<u>2003-C</u>	<u>X</u>	—	—

(Please attach a separate sheet if more signatures are necessary.)

**PLEASE FORWARD COMPLETED REQUEST FORM TO:**

Laguna Woods Village Landscape Division  
P. O. Box 2220, Laguna Hills, CA 92654-2220

★ Additional  
Signatures on  
Reverse →

Signatures of All Neighbors Affected by this Request (owner signature is required below for lessees and occupants of neighboring residences):

Agenda Item # 10d  
Page 6 of 14

Attachment to Mutual Landscape Request Form  
 Reason for Request – Tree Removal  
 2001 Via Mariposa W, Unit A  
 Owners: Sergio & Maureen Serrano.  
 July, 12, 2018

The tree is a very large Brazilian pepper tree that is 5 feet from our patio wall. The canopy extends 7 feet over our patio and produces very large amounts of litter, not on a seasonal basis, but for most of the year. The litter is primarily composed of ripe berries and dead leaves. The berry is hazardous to our dog and is deteriorating our laminate flooring in the house.

The tree was trimmed late last summer and we were then told that it could not be trimmed so that the canopy would not cover the patio. Hence, we are requesting removal of the tree for the reasons detailed below:

- From approximately January through October, 10 months out of the year, the tree drops copious amounts of red berries and other litter inside our patio and, to a lesser extent, inside our atrium 30 feet away. We have tried to live with this tree for 14 months now, however, the daily maintenance required in our patio and walkway is distressing to us. A tree that sheds large volumes of litter right inside one's patio seems out of place in a retirement community.
- Unfortunately, our dog enjoys eating the berries. The berries are mildly toxic. Consequently, we are unable to allow her in the patio without continuous 100% supervision as the berries that may fall after the patio is swept cause her gastric problems including vomiting. Worse yet, the berries release a substance that causes skin irritation (dermatitis) to her paws. Although Maureen Serrano is a retired Veterinary Technician registered with the State of California, and is qualified to manage dermatitis in dogs, on one occasion the dermatitis was severe enough to cause an expensive visit to a veterinary in order to get prescription medication.
- The new laminate floor inside the house is deteriorating as a result of the berries. Even though we wipe our feet on two floor mats and manually remove the berries embedded in the shoe soles, a sap-like substance manages to mark the floor. The substance won't scrape off without damage to the floor and requires getting down on the floor and the use of tar/adhesive removers, which are not approved cleaners by the manufacturer of the laminate floor, with extensive elbow grease. Again, that seems out of place in a retirement community.
- All the neighbors that signed this request use the sidewalk in the common area under the tree and they all expressed their annoyance with the litter. Others complained about the berries being a nuisance as they track onto their floors. Additionally, and for your information, two neighbors said that during the rainy season they have slipped on the accumulation of berries and leaves.
- The excessive debris from this tree in our patio precludes us from installing a patio cover.

Thank you very much for your consideration.

Attachments:

University of California – Safe and Poisonous Garden Plants – Toxic Plants  
 San Francisco Chronicle – SFGATE – Facts About Problems with Pepper Tree Plants  
 San Francisco Chronicle – SFGATE – Is a Pepper Tree Bad for Dogs?  
 Photos of the tree canopy over the patio, flooring marks and the berries.

# Toxic Plants (by common name) - Safe and Poisonous Garden Plants

## University of California Safe and Poisonous Garden Plants

### Toxic Plants (by common name)

To search for **photos** of these plants, check the UC Berkeley [CalPhotos: Plants](#) site.

**Toxicity Class** (third column in table below)

1. **Major Toxicity:** These plants may cause serious illness or death. If ingested, immediately call the Poison Control Center -- (800) 222-1222 -- or your doctor.
2. **Minor Toxicity:** Ingestion of these plants may cause minor illnesses such as vomiting or diarrhea. If ingested, call the Poison Control Center or your doctor.
3. **Oxalates:** The juice or sap of these plants contains oxalate crystals. These needle-shaped crystals can irritate the skin, mouth, tongue, and throat, resulting in throat swelling, breathing difficulties, burning pain, and stomach upset. Call the Poison Control Center or your doctor if any of these symptoms appear following ingestion of plants.
4. **Dermatitis:** The juice, sap, or thorns of these plants may cause a skin rash or irritation. Wash the affected area of skin with soap and water as soon as possible after contact. The rashes may be very serious and painful. Call the Poison Control Center or your doctor if symptoms appear following contact with the plants.

Toxic plants: Common name	Scientific name	Toxicity class
Achillea	<i>Achillea millefolium</i>	2,4
Aconite	<i>Aconitum spp.</i>	1
African boxwood	<i>Myrsine africana</i>	2
African lily	<i>Agapanthus spp.</i>	2,4
Agapanthus	<i>Agapanthus spp.</i>	2,4
Agave	<i>Agave spp.</i>	2,3,4
Aglaonema	<i>Aglaonema spp.</i>	3,4
Ailanthus	<i>Ailanthus altissima</i>	2,4
Alder	<i>Alnus spp.</i>	4
Allium	<i>Allium spp.</i>	2
Almond (seeds)	<i>Prunus spp.</i>	1
Alocasia	<i>Alocasia spp.</i>	3,4
Alstroemeria	<i>Alstroemeria spp.</i>	2,4
Amaryllis	<i>Amaryllis belladonna</i>	2,4
Amaryllis	<i>Hippeastrum spp.</i>	2



## Toxic Plants (by common name) - Safe and Poisonous Garden Plants

Anemone	<i>Anemone spp.</i>	2,4
Angel's trumpet	<i>Brugmansia spp.</i>	1
Anthurium	<i>Anthurium spp.</i>	3,4
Apple (seeds)	<i>Malus spp.</i>	1
Apricot (seeds)	<i>Prunus spp.</i>	1
Aralia, Ming	<i>Polyscias spp.</i>	2,4
Arborvitae	<i>Thuja spp.</i>	2,4
Arrowhead plant	<i>Syngonium podophyllum</i>	3
Arum	<i>Arum spp.</i>	3,4
Ash	<i>Fraxinus spp.</i>	4
Asparagus, Garden	<i>Asparagus officinalis</i>	4
Asparagus, Sprenger	<i>Asparagus densiflorus</i>	4
Aster	<i>Aster spp.</i>	4
Aucuba, Japanese	<i>Aucuba japonica</i>	2
Autumn crocus	<i>Colchicum autumnale</i>	1,4
Azalea	<i>Rhododendron spp.</i>	1
Baby's breath	<i>Gypsophila paniculata</i>	4
Balsam fir	<i>Abies balsamea</i>	4
Barberry	<i>Berberis spp.</i>	2,4
Begonia	<i>Begonia spp. (some spp.)</i>	2,3
Belladonna	<i>Atropa belladonna</i>	1
Belladonna lily	<i>Amaryllis belladonna</i>	2,4
Bermudagrass	<i>Cynodon dactylon</i>	4
Birch tree	<i>Betula spp.</i>	2,4
Bird-of-paradise shrub	<i>Caesalpinia gilliesii</i>	2
Bishop's weed	<i>Ammi majus</i>	4
Bittersweet	<i>Celastrus scandens</i>	2
Black calla	<i>Arum spp.</i>	3,4
Black cherry (seeds)	<i>Prunus spp.</i>	1
Black henbane	<i>Hyoscyamus niger</i>	1
Black locust (seeds)	<i>Robinia pseudoacacia</i>	1
Black nightshade	<i>Solanum spp.</i>	1

## Toxic Plants (by common name) - Safe and Poisonous Garden Plants

Blanket flower	<i>Gaillardia spp.</i>	4
Bleeding heart	<i>Dicentra spp.</i>	4
Blood lily	<i>Haemanthus spp.</i>	2,4
Blue gum	<i>Eucalyptus spp.</i>	2,4
Boston ivy	<i>Parthenocissus spp.</i>	3,4
Bottle tree	<i>Brachychiton populneus</i>	4
Bougainvillea (thorns)	<i>Bougainvillea spp.</i>	4
Boxwood	<i>Buxus sempervirens</i>	2,4
Brazilian pepper tree	<i>Schinus terebinthifolius</i>	2,4
Broom	<i>Cytisus spp.</i>	2
Buckeye	<i>Aesculus spp.</i>	2
Buckthorn	<i>Rhamnus spp.</i>	2,4
Burning bush	<i>Euonymus spp.</i>	2
Bushman's poison	<i>Acokanthera spp.</i>	1
Buttercup	<i>Ranunculus spp.</i>	2,4
Butterfly weed	<i>Asclepias spp.</i>	2,4
Cactus (thorns and sap)	<i>Cactus spp.</i>	4
Cajeput tree	<i>Melaleuca quinquenervia</i>	4
Caladium	<i>Caladium bicolor</i>	3,4
California bay	<i>Umbellularia californica</i>	4
California buckeye	<i>Aesculus spp.</i>	2
California laurel	<i>Umbellularia californica</i>	4
California pepper tree	<i>Schinus molle</i>	4
Calla, Black	<i>Arum spp.</i>	3,4
Calla lily	<i>Zantedeschia aethiopica</i>	3,4
Camphor tree	<i>Cinnamomum camphora</i>	2
Candytuft, Evergreen	<i>Iberis sempervirens</i>	4
Cape plumbago	<i>Plumbago auriculata</i>	4
Cardinal flower	<i>Lobelia spp.</i>	1,4
Carnation	<i>Dianthus caryophyllus</i>	2,4
Carolina jessamine	<i>Gelsemium sempervirens</i>	1,4
Carolina laurel cherry	<i>Prunus caroliniana</i>	1

Is a Pepper Tree Bad for Dogs? | Home Guides | SF Gate

## < SFGATE HOME GUIDES

### Is a Pepper Tree Bad for Dogs?

Pepper tree, or Brazillian pepper tree (*Schinus terebinthifolius*), isn't listed as one of the toxic plants known to be deadly to dogs. Still, that doesn't mean no harm will come to your pet if it comes in contact with pepper tree. The ASPCA recommends keeping your pets away from pepper tree and pepper tree berries to stay on the safe side.



#### Related Articles

- 1** Facts About Problems With Pepper Tree Plants
- 2** What Are the Treatments for Psyllids on Pepper Trees?
- 3** Trim Mature California Pepper Trees
- 4** Germinating California Pepper Tree Seeds

Ad



[Download PDF \(Free\)](#)

To View PDF, Download Here

FromDocToPDF.com

#### Ingestion

Pepper tree is listed by the University of California as a Class 2, minor toxicity plant when ingested by humans. This means it can cause you to feel sick if you ingest it but isn't likely to be deadly. The same symptoms may occur when your pet ingests the plants. The ASPCA reports the plant can cause gastrointestinal irritation. This irritation may lead to vomiting, diarrhea, heaving or a general appearance of feeling unwell in dogs. If your dog ingests any part of the plant, not just the berries, call your vet for guidance. Any plant can cause a reaction in an animal that can be minor or serious.

Is a Pepper Tree Bad for Dogs? | Home Guides | SF Gate

## **Dermatitis** **SFGATE HOME GUIDES**

The sap and juices of the pepper tree contain substances that have been known to cause skin irritation. These volatile substances can cause skin irritation, such as pain, swelling and itching. Dogs have a tendency to lick and scratch at irritated skin, which can lead to hair loss and infection. If your dog comes in contact with pepper tree sap, wash the animal right away in warm water, then monitor it for signs of discomfort. Contact your vet if a reaction occurs.

Ads



### *Get Your Dog To Listen*

Try this free exercise to get your dog to calm down, listen and obey.

[www.thedogtrainingsecret.com](http://www.thedogtrainingsecret.com)

### *Angel Quintero Allstate CA*

Auto, Home, Life & Renters Insurance. Free Quote In Minutes, Call Now & Save

[agents.allstate.com](http://agents.allstate.com)

### *Pack Dog Walking OC Pup Scouts*

1st Walk Free. OC's Favorite Day Care Service. Outdoor Fun & Adventure! Call Now

[ocpupscouts.com](http://ocpupscouts.com)

### *Private in Home Dog Training*

Humane Effective A Better Way to a Better Dog

[dogtrainingorangecountysouth.com](http://dogtrainingorangecountysouth.com)

## **From The Web**

Sponsored Links by Taboola

### **California Will Pay Homeowners To Install Solar**

Energy Bill Cruncher Solar Quotes

### **California: Gov't Will Pay Off Your Mortgage If You Have No Missed Payments**

Mortgage Quotes

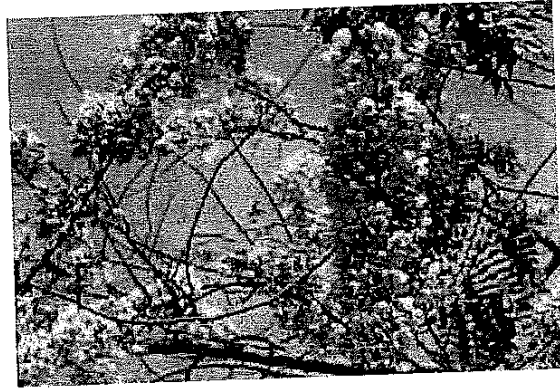
### **Couple Makes A Bet: No Eating Out, No Cheat Meals, No Alcohol. A Year After, ...**

IcePop

## < SFGATE HOME GUIDES

### Facts About Problems With Pepper Tree Plants

With their interesting weeping forms, delicate leaflets, and profuse flowers and berries, both California pepper tree (*Schinus molle*) and Brazilian pepper tree (*Schinus terebinthifolius*) are favorites for some. But they are shunned by others. Both trees provide dense shade, with California pepper tree growing 25 to 40 feet tall in U. S. Department of Agriculture plant hardiness zones 8 through 11 and Brazilian pepper tree growing 15 to 30 feet tall in USDA zones 9 through 11.



#### Related Articles

- 1** Trim Mature California Pepper Trees
- 2** Is a Pepper Tree Bad for Dogs?
- 3** What Are the Treatments for Psyllids on Pepper Trees?
- 4** Kill Brazilian Pepper Trees Without Chemicals

Ad



#### Peterson's Tree Works

Free Estimates Certified Arborists Don't Ruin Your Trees Call us now

[www.petersonstreeworks.com](http://www.petersonstreeworks.com)

#### Invasive Listings

Both California and Brazilian pepper trees appear on invasive lists in some states, meaning they crowd out native plants and destroy the habitat for animals that depend on native plants. In some cases, the listings also mean it is illegal to own or grow the plant. Pepper trees spread primarily through birds and small mammals eating the prolific berries and spreading seeds.

#### Debris Problems

## Facts About Problems With Pepper Tree Plants | Home Guides | SF Gate

With their prolific berries and 4- to 6-inch clusters of flowers, pepper trees produce a lot of litter. Other litter include the branches on both trees that break frequently, with or without wind, and the numerous leaflets that fall even through the trees are evergreen. Female California pepper trees produce berries twice a year, in fall and winter, adding more litter to be cleaned up from yards, sidewalks or brushed off of parked cars.

### Problematic Root Systems

The California pepper tree has roots that go everywhere and anywhere in search of water and nutrients, making it drought-tolerant but problematic. Its surface roots make it impossible to grow anything under the tree and the roots' aggressive qualities break pavements and invade sewers and drains. Brazilian pepper tree roots produce suckers that give the tree a dense thicket appearance if they are not removed.

### Toxic Properties

Pepper trees belong to the Anacardiaceae family, as do other poisonous plants, including poison oak (*Toxicodendron diversilobum*), which grows in USDA zones 5 through 9. Not surprisingly, the attractive leaflets of pepper trees can cause similar allergic skin reactions in some people as do the other poisonous plants. If eaten by people or pets, the berries of Brazilian pepper trees cause gastric problems.

Ads

### 3 Foods to Never

Must See: These 3 popular foods make for a really bad breakfast and digestion.

nucific.com

### 1 Worst Carb After Age 50

Here is 1 carb you should avoid if you struggle with weight gain.

HealthPlus50

### Peterson's Tree Works

Free Estimates Certified Arborists Don't Ruin Your Trees Call us now

www.petersonstreeworks.com

### O.C. Tree Care

Call today for a free consultation.

octreecare.com

### From The Web

Sponsored Links by Taboola